

Pueblito

The three-bed Pueblito is exceptionally large. Sophisticated, stylish and set over two levels, it provides home owners with that extra storage capacity, turning their home into an oasis of calm.

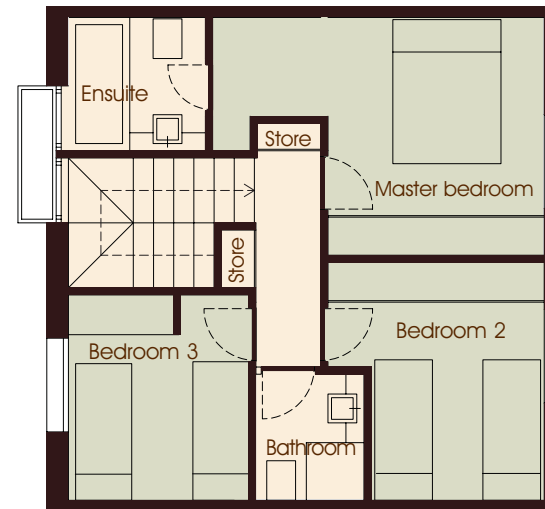
Enjoy total seclusion by relaxing in the Pueblito's private, enclosed garden patio area - the perfect place to enjoy a family barbecue or a crisp glass of white wine as the sun sets.

Special features:

- Extra wide house (7metres), creating open space
- Open-plan ground floor
- Feature staircase
- Feature fireplace
- Full-length glazed doors lead out to the terrace
- Front garden patio area
- Traditional window box
- Unusually spacious
- Generous storage throughout the house
- Exterior storage area (optional extra)



Ground Floor



First Floor

Three-bedrooms, two-bathrooms, over two floors

Overview

Plot 180 m² - 250 m²

Footprint of property	100m ²
Pool terrace	45.6m ²
Terrace off living room	40m ²

Total 185.6m²

Pool	19.60 m ² (7.0 X 2.80 m)
Parking	11.00m ²
Pathways	5.00m ²

Room Dimensions

Living room	6.70m	x	4.58m
Kitchen	3.85m	x	2.09m
Store	1.70m	x	0.80m
Cloakroom	0.90m	x	1.92m
Master bedroom/dressing area	5.15m	x	4.90m
Master ensuite	1.85m	x	1.90m
Bedroom 2	3.30m	x	3.00m
Bedroom 3	2.85m	x	2.50m
Bathroom	1.75m	x	1.50m

Plot Layout

